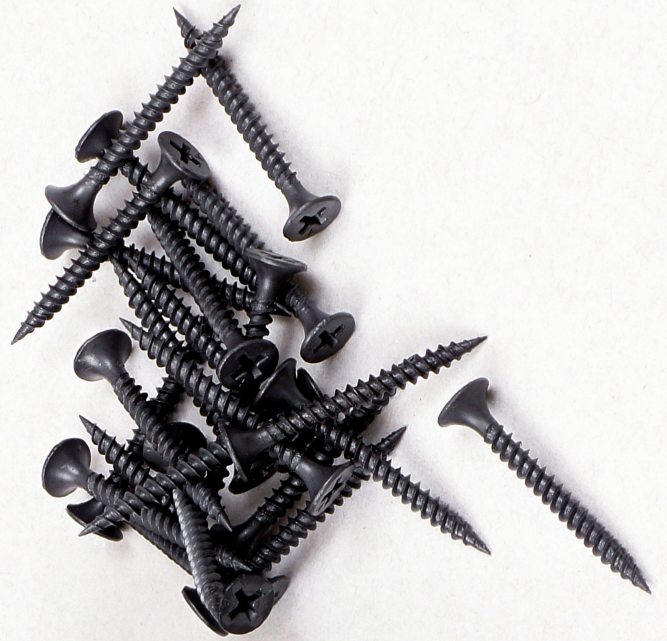


CEILING | SOLUTIONS

Your 'Fifth Wall' solution



MATERIAL DATA SHEET

Tel: + 260 211 274848

Fax: + 260 211 274847

Mob: + 260 972000003

Website: www.otk.com.zm

Chipwenupwenu rd, Lusaka, Zambia

OTK LIGHT STEEL CHANNELS FOR PLASTER BOARD AND PVC CEILING:

OTK Light Steel ceiling Systems

Our profiles are high standard, humidity resistant, heavy zinc coated and durable quality products which meet the standards of ASTM C99-645, ASTM A366/366M, A653M95-, BS EN10142:1991, BS2994:1976 & BS2989:1982 ZM 750. We are also proud to declare that OTK is using steel with high zinc coating of G 90/Z275, which is higher than that recommended by ASTM Zinc Coating.

Our profiles are heat resistant and qualify with the fire resistance rate E119.

Using cold-formed steel, we manufacture our innovative OTK channels and light steel frames for ceilings and partitioning.

The OTK Light steel system is the combination of Wall Angle, Main Channel and of Furring Channel to form a grid for suspended ceiling to be covered with a variety of ceiling finishes ie; Gypsum boards, Fibre cement Boards and PVC boards.

Additionally the Perforated light steel Channels; Corner Beads, Edge trims, and Board Protectors play a major role in Design and perfect Plastered skimmed finish.

OTK Edge Trim

- Also known as Edge Angle, Corner...

- Thickness:

0.4mm, 0.5mm, 0.55mm

- Length:

2.85M & 4M and we can produce various cut to length sizes

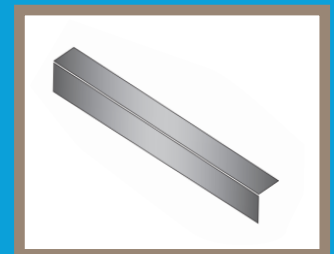
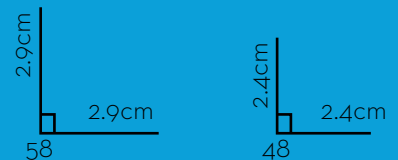
- Available

24*24 mm & 29*29mm

- Usage:

The Wall angle is the first component to go into a ceiling sub-structure. It is fixed to the wall and it makes a perfect Levelled Platform for the finished ceiling.

It also used to suspend from the Roof, Trusses/ Purlins, or concrete soffits



OTK Main Channel

- Also known as U-Channel, C-Channel, Main Runner, and Primary Channel...

- Thickness:

0.5mm, 0.55mm, 0.6mm

- Length:

2.85M & 4M and we can produce various cut to length sizes

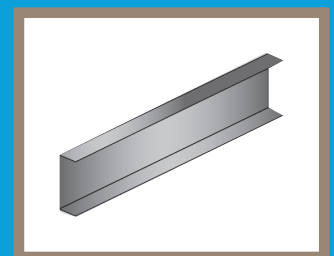
- Standard Spacing between each Main Channel

120 cm/1.2 M

- Available:

11 mm* 38mm

- Usage: The Main Channel is the next component to go into your ceiling sub-structure. It creates the support of the finished ceiling. It can hold up to 25Kg / m². It is mounted on the angles. It is also used to suspend from the Roof, Trusses/ Purlins, or concrete soffits

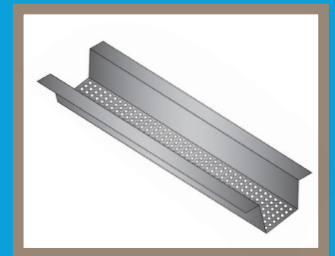
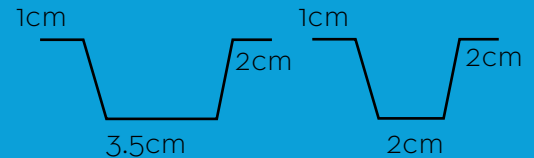


Furring Channels

- Also known as Omega Channel, Hat Channel...
- Thickness:
0.4 mm, 0.45 mm, 0.5 mm
- Standard Length:
2.85 m & 4m and we can produce various cut to length sizes
- Standard Spacing between each Furring Channel
60 cm/ 0.6 M for Gypsum a, 40 cm/ 0.4 for PVC ceiling Boards
- Available:
20 mm * 35 mm, 20 mm * 20 mm
- Usage:

The Furring Channel is the end component in the sub-structure which receives the boards. The use of the Furring channel is to give a levelled area for the ceiling boards to sit. It also helps to cover the installed air conditioning ducts and other visible wiring. The furring

Angle and Main channel to form a grid for suspended ceiling to be covered with Gypsum Boards, Fibre cement Boards and PVC boards.
system is the combination of Furring Channel, wall Furring 20 is ideal for PVC boards



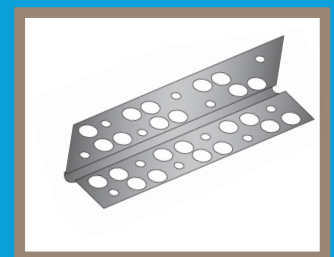
OTK LIGHT STEEL CHANNELS FOR PLASTERING AND DESIGN:

Corner Beads

- Also Called Perforated Angle, Corner Perforated...
- Thickness:
0.4 mm, 0.45 mm, 0.5 mm
- Length:
2.85 M & 4 M and we can produce various cut to length sizes
- Available:
24 * 24 mm & 29 * 29 mm
- Usage:

It's a vertical moulding used to protect the external angle of two intersecting surfaces.

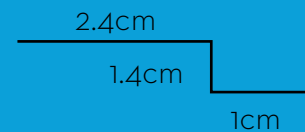
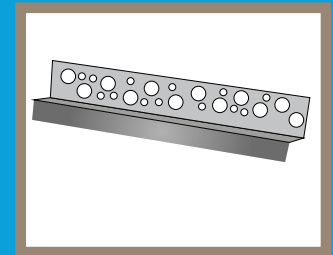
It has multiple precisely cut perforated holes, and a perfect round groove that allows the plaster to grip into and creates a strong bond with the surface that is being plastered.



OTK LIGHT STEEL CHANNELS FOR PLASTERING AND DESIGN:

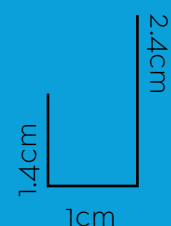
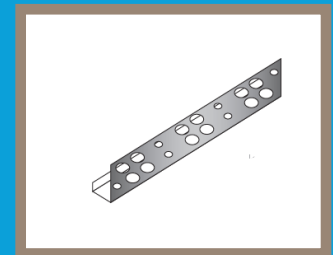
Edge Trim

- Also known as Shadow Line, Juan...
- Thickness:
0.4mm, 0.45mm, 0.5mm
- Length:
2.85M & 4M and we can produce various cut to length sizes
- Available:
12 mm* 12 mm* 24mm
- Usage:
It is fitted onto the board by the wall. It emphasises the straightness of the ceiling, it gives a shadow and a floating ceiling look.
It has multiple precisely cut perforated holes, and a perfect round groove that allows the plaster to grip into and creates a strong bond with the surface that is being plastered



Corner Beed

- Also known as Board guard and Gypsum guard...
- Thickness:
0.4mm, 0.45mm, 0.5mm
- Length:
2.85M & 4M and we can produce various cut to length sizes
- Available:
14 mm* 10mm* 24mm
- Usage:
It is used to strengthen edges of the Gypsum designed ceiling. In turn It is also used to strengthen the edges of the Dry wall Partition
It has multiple precisely cut perforated holes, and a perfect round groove that allows the plaster to grip into and creates a strong bond with the surface that is being plastered





OTK CEILING CHANNELS LIGHT STEEL SYSTEM

OTK Light steel Dry wall system is the combination of Tracks and Studs used to form rigid artificial walls.

OTK TRACKS

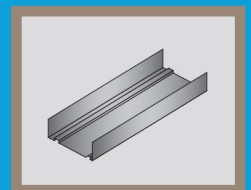
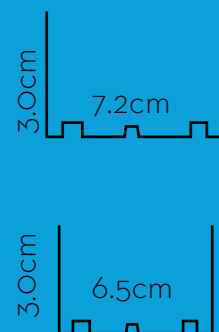
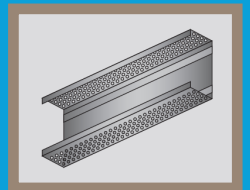
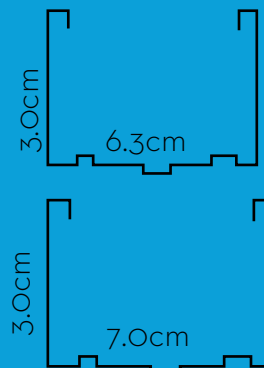
- Thickness
0.5mm
- Length: 2.7M & 3M
- Available
65mm* 30mm & 72mm* 30mm
- Usage:

A track is the main component that goes into the Dry wall Partition. It is fixed to the floor, wall and ceilings. Its main Purpose is to create a straight-levelled frame for the partition.

OTK STUDS

- Thickness
0.5mm
- Length:
2.7M & 3M
- Available:
63mm* 30mm & 70mm* 30mm
- Usage

Installed vertically and horizontally in conjunction with the Tracks. It's main purpose is to receive Gypsum boards and to create a straight Surface and a strong sub-structure.



SUSPENDED CEILING OR LAY-IN SYSTEM:

OTK Suspended Ceiling or Lay-in System

The OTK Light steel Lay-in suspended system is a combination Main Tee 3600 Cross Tees 1200 Cross tees 600 and Perimeter PP wall Angles. OTK Lay-in system is an exposed Metal T-grid system, which is suspended below the ceiling or roof deck using a series of wires. It can receive different ceiling tiles of different specs ie: 7mm, 9mm, 12.5 mm or 15 mm including Gypsum Fibre, and light steel ceiling tiles

OTK MAIN TEE - T24

- Also known as Main Runner

- Length:

3.6M

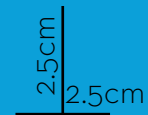
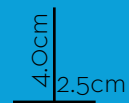
- Available:

40mm* 24mm

- Usage:

It is made of GI steel with aluminium capping used as the main support of the system.

It joins the Cross tee through the interlock system



OTK CROSS TEE - T24

- Length

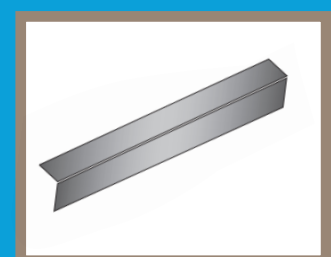
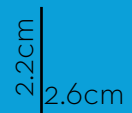
1.2 M & 0.6M

- Available

25mm* 24mm

- Usage:

It is made of GI steel with aluminium capping that interlocks with the Main tees to form diagrid Bays



OTK PP* WALL ANGLE (*PRE-PAINTED)

- Length:

3M & 3.6M and we can produce various cut to length sizes

- Available:

22mm* 26mm

- Usage:

It is made of Pre-painted aluminium coils. It is fixed to the wall and it dictates the height of the ceiling